

# FOR LEASE



**AMB PROPERTY CORPORATION**

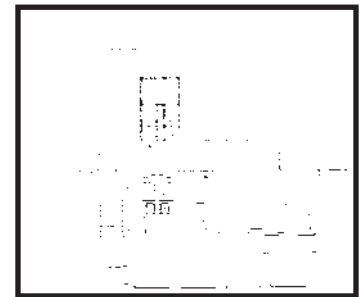
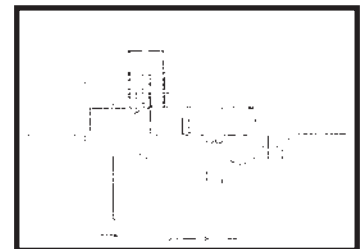
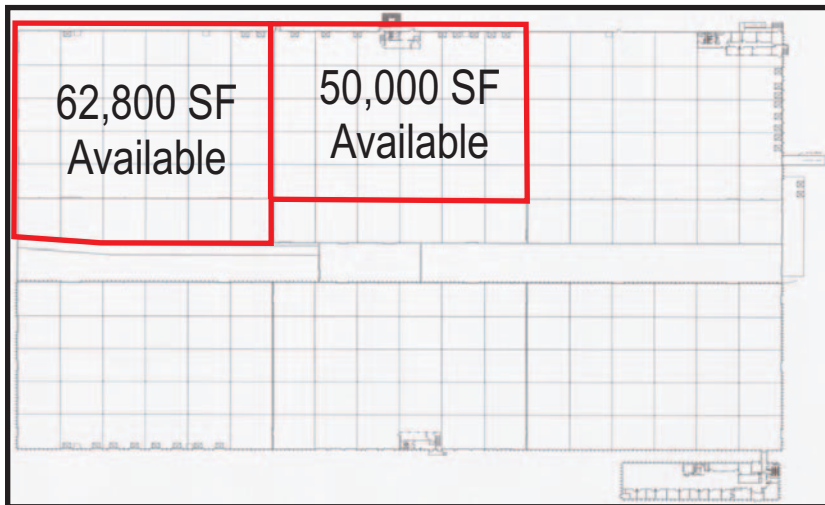
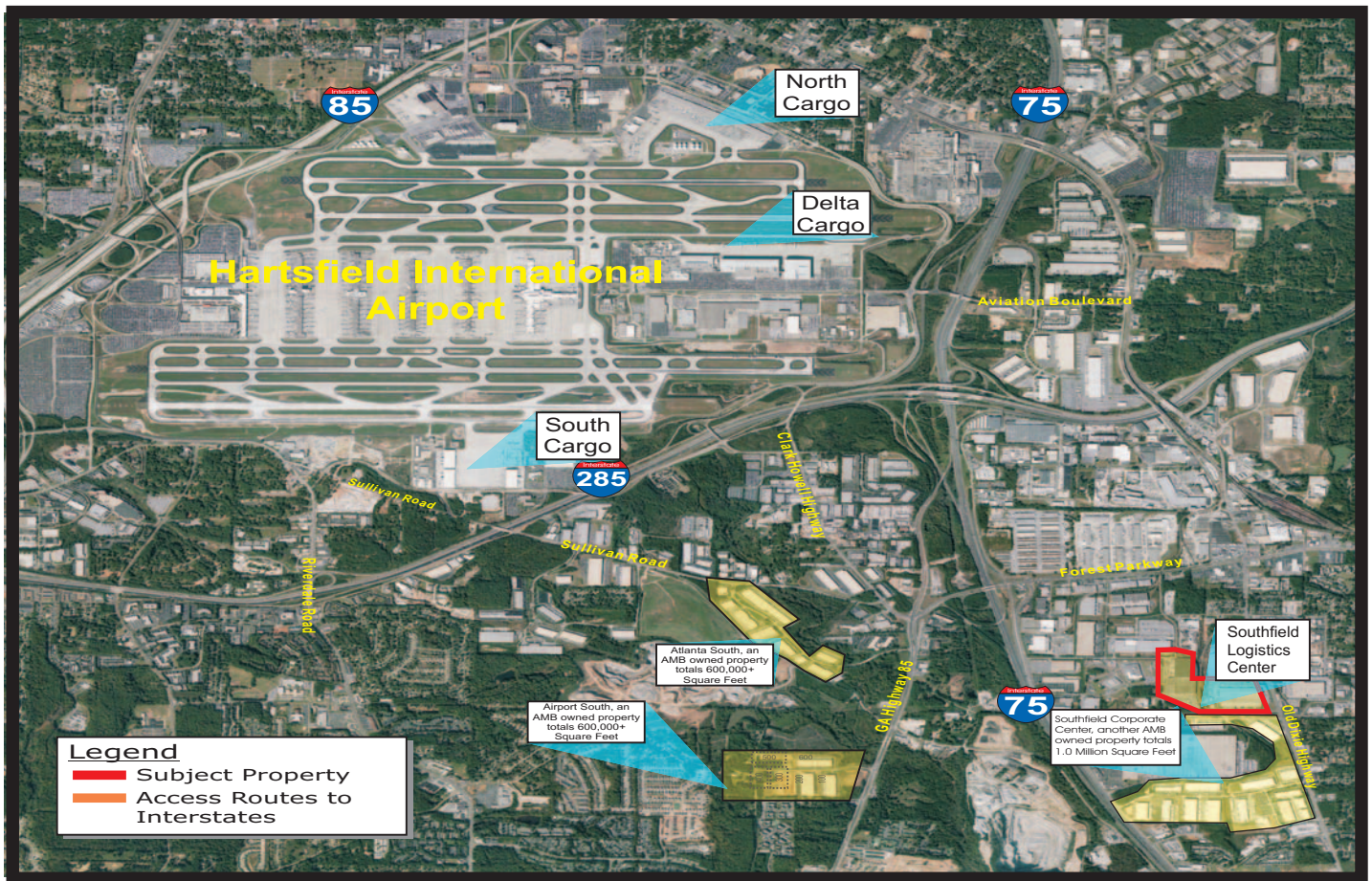
A tradition of nontraditional thinking.™

## **SOUTHFIELD LOGISTICS CENTER | 5345 OLD DIXIE HIGHWAY CLAYTON COUNTY, GEORGIA**



### AN AMB PROPERTY

- Total Square Feet | 373,900
- Total Available | 112,800 Square Feet
- Minimum - 50,000 S.F. | Maximum - 112,800 S.F.
- Loading Doors | 26 8'x10' Dock Doors
- Ceiling Height | 26' Average
- Bay Depth | 240' Average
- Office Size | Build to Suit
- Accessibility | Excellent Access to I-75, I-285 and Hartsfield International Airport
- Parking | Abundant Space w/gated lot
- Additional Acreage Available for Trailer Storage
- Power | 400 amps, 480 volts
- Aggressive Lease Rates!
- Short Lease Terms Available
- City of Forest Park, Clayton County



For more information contact:

Greg Herren  
 (678) 904-1901  
 gregh@seefriedproperties.com

Doug Smith  
 (678) 904-1919  
 dougs@seefriedproperties.com

 **SEEFRIED PROPERTIES, INC.**

Seefried Industrial Properties  
 4200 Northside Parkway  
 Building 1, Suite 300  
 Atlanta, Georgia 30327  
 Phone (404) 233-0204  
 Fax (404) 266-3864  
 www.seefriedproperties.com